

Multi-Use Transformer Replacement Kit Midco Kit No. 5734-50

120/208/240 Primary, 24V Secondary, 40VA, 50/60 Hz

CAUTION: Read and understand this service bulletin thoroughly before starting.
Only a trained, experienced service technician should attempt this service procedure.

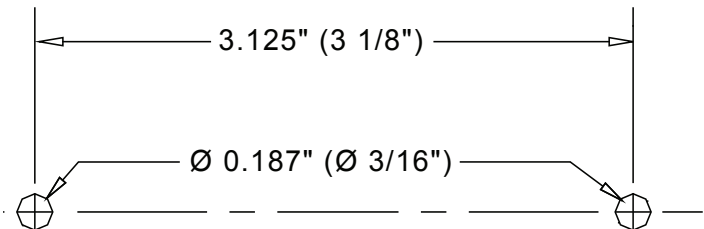
The original transformer is no longer available. The replacement transformer in this kit ...

- May not be identical to the one you are replacing
- Has a 40VA rating. When replacing a 20VA or 30VA transformer on earlier burners, the increased volt amp rating will not affect the burner operation or any associated controls and is electrically interchangeable
- May have a different mounting plate with different mounting hole locations. On the replacement transformer, the center line to center line spread of the mounting holes is 3.125" (3-1/8"). It may be necessary to provide a new mounting hole on the burner. For further assistance, please see "Mounting Template" below
- The replacement transformer must be secured to the burner chassis to insure that the transformer is grounded
- Includes multiple primary wires to allow use with different voltages. Please use caution in selecting the correct wires for your application! For further assistance, please see "Transformer Wire Color Chart" below

DANGER: Before attempting service, turn off gas to burner and turn off power to burner at the disconnect switch (not at burner on-off switch. Failure to do so could result in personal injury or death.)

1. Compare the replacement transformer with installed the original transformer noting wire lead colors and best position to utilize new wire lead length. If, wire colors are different, correct wiring diagram on the unit. If, doubt exists about the connections, then tag and mark old wire leads and/or terminal connections.
Note: The replacement transformer is supplied without wire terminals. Closed end connectors are supplied, which can be used to splice the replacement transformer to the original transformer leads, if required.
2. Disconnect and remove originally installed transformer and discard.
3. Confirm position of replacement transformer will not cause interference when closing the burner enclosure or access cover.
4. If necessary, drill an additional $\varnothing 0.184"$ ($\varnothing 3/16"$) mounting hole to accommodate the increased distance between the mounting holes in the replacement transformer.
5. Install replacement transformer and connect wires to proper terminals as described in step 1 and note above.
6. Turn on gas to burner and turn on power at disconnect switch.
7. Refer to lighting instructions and cycle burner. Observe for normal operating sequences.

Transformer Wire Color Chart		OLD	NEW
Secondary	24 VAC	YEL	BLU
		YEL	YEL
Primary	COM	BLK	BLK
	120 VAC	WHT	WHT
	208 VAC	BLU	RED
	240 VAC	RED	ORN



Mounting Template

Figure 1 - To Scale

AVOID ERROR IN PARTS SELECTION. When ordering use complete MIDCO Part Number and Description. Furnish Burner Model Number, Bill of Material Number and Serial Number (if available) from the specification plate found on the product.

IMPORTANT: Availability of parts as well as specifications are subject to change without notice. Please consult factory for item availability.

SAFETY INFORMATION TERMS: The following terms are used to identify hazards, safety precaution of special notations and have standard meanings throughout this manual. They are printed in all capital letters using a bold type face as shown below, and preceded by the exclamation mark symbol. When you see the safety alert symbol and one of the safety information terms as shown below, be aware of the hazard potential.



- DANGER:** Identifies the most serious hazards which will result in severe personal injury or death.
WARNING: Signifies a hazard that could result in personal injury or death.
CAUTION: Identifies unsafe practices which would result in minor personal injury or product and property damage.



Midco
INTERNATIONAL

Midco® International Inc.
4140 West Victoria Street
Chicago, Illinois 60646
toll free 866.705.0514
fax free 866.580.8700
web www.midcointernational.com
e-mail sales@midcointernational.com