

★MADE in the USA★

Motor Replacement Kit # 8437-54R



CAUTION: Read and understand this service bulletin thoroughly before starting. Only a trained, experienced service technician should attempt this service procedure.

The motor Replacement Kit contains the following:

Part #	Description	Qty
8437-54	1/6 HP Motor 115/230V 50/60 Hz	1
8471-99	Service Bulletin Replacement Instructions	1

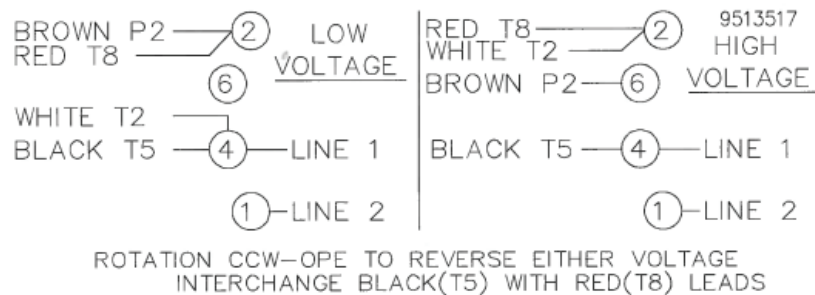


Figure 1 - Wiring Label

Instructions for Motor Replacement

- Turn off the gas and disconnect electrical box.
- Disconnect motor wire leads. Remove flexible conduit with motor leads from motor conduit fitting. Do not discard red conduit bushing! Remove and retain conduit fitting from motor knock out hole.
- Remove 5/16-18 hex head screws, 5/16" lock washers, and 5/16" flat washers (do not discard) to separate motor from housing. Remove blower wheel from motor shaft by loosening the set screw (do not discard) on the blower wheel. Discard motor.
- Replace with new motor. Install blower wheel ensuring the set screw is tightened on the flat plane of the motor shaft. Maintain a gap of .44" between motor and blower wheel. Install motor and blower wheel back to the housing with the hardware saved in step #3.
- Install retained conduit fitting in motor knock out opening and draw motor leads through conduit fitting. Open back panel by removing two screws (do not discard) and connect motor leads per wiring diagram shown in Figure 1. Be sure to verify that the actual motor label wiring diagram matches the wiring diagram depicted in this service bulletin.
- Replace the back panel. Turn on burner power and confirm blower wheel rotation is correct as viewed from the shaft end.
- Turn on all gas and test burner for normal operating sequence.

AVOID ERROR IN PARTS SELECTION. When ordering use complete MIDCO Part Number and Description. Furnish Burner Model Number, Bill of Material Number and Serial Number (if available) from the specification plate found on the product.

IMPORTANT: Availability of parts as well as specifications are subject to change without notice. Please consult factory for item availability.

SAFETY INFORMATION TERMS: The following terms are used to identify hazards, safety precaution of special notations and have standard meanings throughout this manual. They are printed in all capital letters using a bold type face as shown below, and preceded by the exclamation mark symbol. When you see the safety alert symbol and one of the safety information terms as shown below, be aware of the hazard potential.



- DANGER:** Identifies the most serious hazards which will result in severe personal injury or death.
- WARNING:** Signifies a hazard that could result in personal injury or death.
- CAUTION:** Identifies unsafe practices which would result in minor personal injury or product and property damage.



Midco[®]
INTERNATIONAL

Midco[®] International Inc.
4140 West Victoria Street
Chicago, Illinois 60646
toll free 866.705.0514
tel 773.604.8700
fax 866.580.8700
web www.midcointernational.com
e-mail sales@midcointernational.com

As an ISO 9001 certified company, we proudly design, manufacture and assemble our products in Chicago, Illinois, USA.

Quality Designed for Proven Performance

120
8471 99
Printed in USA