



★MADE in the USA★

## VA Inlet Air Filter - Installation Instructions for Burner Models V1-V10



**CAUTION:** Read and understand this service bulletin thoroughly before starting. Only a trained, experienced service technician should attempt this service procedure.

### Installation Instruction Steps for all Blowers on the VA Series Burners

Filter Assembly	Midco Blower Part #	Vendor Blower Part #	Burner Models	Air Filter Pad Item #
2117-25	8435-30	RG175	V1	8413-03
2117-20	8435-23	G1G170	V2	8413-04
2117-36	8435-31	G3G200	V3-V6	8413-05
2117-45	8435-32	G3G250	V7-V10	8413-06

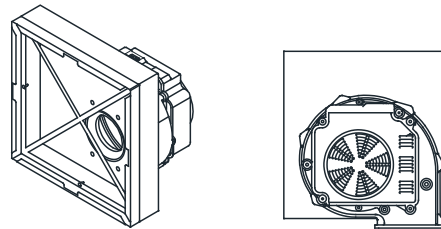


Figure 1 - Filter Box

#### Step One

Position filter box onto blower. Note that the large inlet hole is not centered in the back of the filter box. This should allow the box as a whole to be roughly centered to the blower when the box is correctly aligned to the blower inlet hole. *Figure 1*

#### Step Two

Use the four provided M8 hex head screws and nuts to mount the filter box to the blower. *Figure 2*

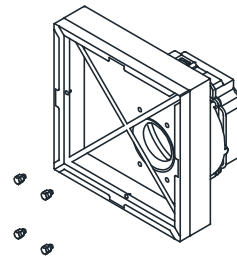


Figure 2 - Mounting with M8 Hex Screws

#### Step Three

Place the air filter media pad into the filter box. For easiest placement, first press the corners of the filter into the frame. Then slip the sides in using the cutaways on each side of the box. *Figure 3*

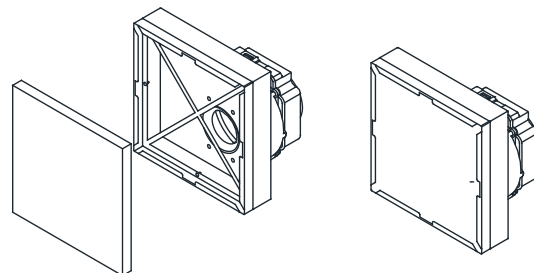


Figure 3 - Filter Pad Placement

**AVOID ERROR IN PARTS SELECTION.** When ordering use complete MIDCO Part Number and Description. Furnish Burner Model Number, Bill of Material Number and Serial Number (if available) from the specification plate found on the product.

**IMPORTANT:** Availability of parts as well as specifications are subject to change without notice. Please consult factory for item availability.

**SAFETY INFORMATION TERMS:** The following terms are used to identify hazards, safety precaution of special notations and have standard meanings throughout this manual. They are printed in all capital letters using a bold type face as shown below, and preceded by the exclamation mark symbol. When you see the safety alert symbol and one of the safety information terms as shown below, be aware of the hazard potential.



**DANGER:** Identifies the most serious hazards which will result in severe personal injury or death.  
**WARNING:** Signifies a hazard that could result in personal injury or death.  
**CAUTION:** Identifies unsafe practices which would result in minor personal injury or product and property damage.



**Midco®**  
INTERNATIONAL

Midco® International Inc.  
4140 West Victoria Street  
Chicago, Illinois 60646  
toll free 866.705.0514  
tel 773.604.8700  
fax 866.580.8700  
web [www.midcointernational.com](http://www.midcointernational.com)  
e-mail [sales@midcointernational.com](mailto:sales@midcointernational.com)

As an ISO 9001 certified company, we proudly design, manufacture and assemble our products in Chicago, Illinois, USA.

Quality Designed for Proven Performance

420  
8476 28  
Printed in USA