

# Replacement Parts List Unipower GB Series



*Installation and Service Manual - 8470-86  
Date Code - April 2000*

- First Construction 1994; date code 3794 (37th week, 1994).



**Midco®**  
INTERNATIONAL

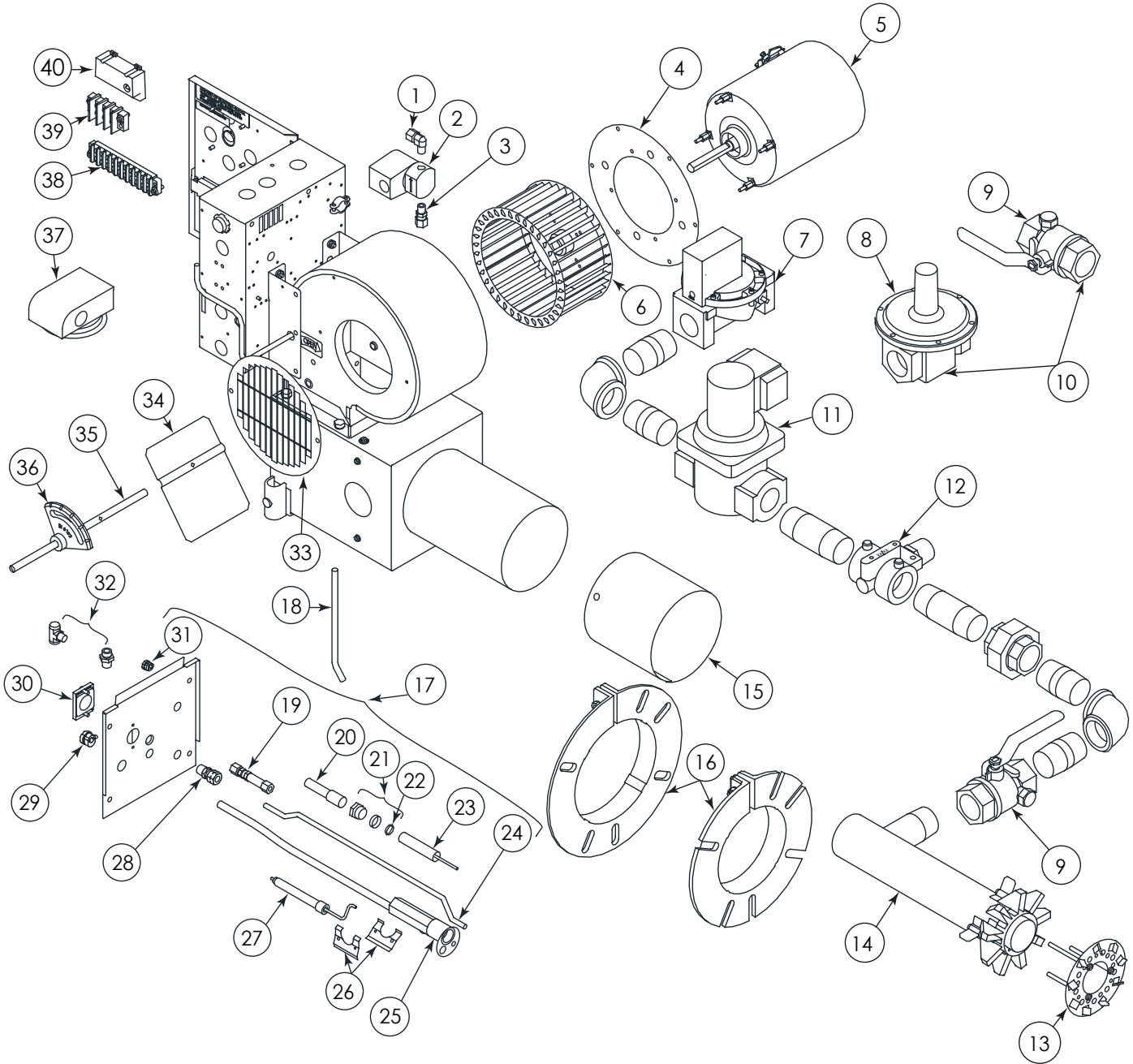
Midco® International Inc.  
4140 West Victoria Street  
Chicago, Illinois 60646  
toll free 866.705.0514  
tel 773.604.8700  
fax 773.604.4070  
web [www.midcointernational.com](http://www.midcointernational.com)  
e-mail [sales@midcointernational.com](mailto:sales@midcointernational.com)

**AVOID ERROR IN PARTS SELECTION.** When ordering use complete MIDCO Part Number and Description. Furnish Burner Model Number, Bill of Material Number and Serial Number (if available) from the specification plate found on the product.

**IMPORTANT:** Availability of parts as well as specifications are subject to change without notice. Please consult factory for item availability.



# Exploded View - GB Series



Item	Part #	Description	N/S = Not Shown
<b>PILOT SHUT OFF VALVE</b>			
1	8483-01	1/8" M X 5/16 T Compression Elbow	
2	8402-37	Gas Safety Shut-Off Valve-1/8" NPT; 24V/1/60	
3	8483-30	5/16" O.D. Tube X 1/8" NPTM Straight Fitting	
<b>MOTOR MOUNTING PLATE</b>			
4	3197-50	Motor Mounting Plate—Used on 56C or 66C Frames (ref. Models G57B, G58B & G69B. Became production item on G56B Models approximately July 1989).	

Item	Part #	Description	N/S = Not Shown
<b>BLOWER MOTORS - 1-Phase, 48M of J48Y Frame (3450 RPM, 1/2" Shaft) Open Drip Proof</b>			
5A	6728-90	G56B 1/6 HP 115/230/1/60/50	
5B	8437-31	G57B 1/3 HP 115/230/1/60	
5C	8437-15	G58B 1/2 HP 115/230/1/60	
5D	8437-25	G69B 3/4 HP 115/230/1/60	
<b>BLOWER MOTORS - 3-Phase, 56C Frame (3450 RPM, 5/8" Shaft)</b>			
5E	8440-19	G58B 1/2 HP 20/230/460/3/60 TENV Motor	
5F	8440-16	G69B 3/4 HP 208/230/460/3/60 TENV Motor	

# Unipower GB Series Parts List

Item	Part #	Description	N/S = Not Shown	Item	Part #	Description	N/S = Not Shown
<b>BLOWER WHEELS</b>				<b>BURNER CHASSIS</b>			
6A	6748-00	G56B 5-1/4" dia x 3-1/2" W (1/2" Bore)		13A	6712-05	Flame Retention Plate 5" w/ Mounting Screws—Models G56B, G57B & G58B	
6B	3427-50	G57B 6-5/16" dia x 4" W (5/8" Bore)		13B	6712-12	Flame Retention Plate 4.9" w/ Mounting. Screws used on OEM models consult factory for applications	
6C	3627-50	G58B & G69B-7" dia x 3-1/2" W (5/8" Bore)		13C	6713-05	Flame Retention Plate 6" w/ Mounting Screws -- Model G69B	
<b>MAIN GAS TRAIN COMPONENT - 24V V48A DIAPHRAGM VALVES</b>				<b>BURNER CHASSIS - NOZZLES</b>			
7A	8419-54	1-1/4" V48A Diaphragm Valve		14A	6735-50	Manifold Weldment (5x1) Nozzle - G56B and G57B Nat & LP Gas and G58B LP Gas	
7B	8419-55	1-1/2" V48A Diaphragm Valve		14B	6735-00	Manifold Weldment (5x2) Nozzle G58B Nat Gas	
7C	8419-56	2" V48A Diaphragm Valve		14C	6740-00	Manifold Weldment (6x2) Nozzle G69B Nat Gas	
<b>MAIN GAS TRAIN COMPONENT - PRESSURE REGULATORS - Maxitrol RV Series</b>				14D 6740-05 Manifold Weldment (6x1) Nozzle G69B LP Gas			
8A	8416-33	RV61 1" Maxitrol Gas Pressure Regulator		<b>BURNER CHASSIS - SLEEVES &amp; FLANGES</b>			
8B	8416-02	RV61 1-1/4" Maxitrol Gas Pressure Regulator		15A	6736-00	Adj Alloy 5"x 5" Sleeve- G56B, G57B & G58B	
8C	8416-05	RV81 1-1/2" Maxitrol Gas Pressure Regulator		15B	6741-00	Adj Alloy 6" Sleeve- G69B	
8D	8416-08	RV91 2" Maxitrol Gas Pressure Regulator		16A	2020300	5" Mounting Flange Kit G56B,G57B & G58B	
8E	8416-11	RV111 2-1/2" Maxitrol Gas Pressure Regulator		16B	2020800	6" Mounting Flange Kit G69B	
<b>MAIN GAS TRAIN COMPONENT - BALL VALVES - Side Taps</b>				<b>BURNER CHASSIS - DRAWER ASSEMBLIES</b>			
9A	8404-23	1" NPT Ball Valve with Side Tap		17A	6755-20	Drawer Assembly with Pilot and Vent Tube. Vent Tube is required when burner is equipped with a V48A Diaphragm Type Main Gas Valve. Order Pilot Gas and Air Orifices separately.	
9B	8404-24	1-1/4" NPT Ball Valve with Side Tap		17B	6755-21	CUL Version: Drawer Assembly with Pilot and Vent Tube. Vent Tube is required when burner is equipped with a V48A Diaphragm Type Main Gas Valve. Order Pilot Gas and Air Orifices separately.	
9C	8404-25	1-1/2" NPT Ball Valve with Side Tap		18	6729-91	Pilot Air Tube-Blower Housing to Drawer Assembly	
9D	8404-26	2" NPT Ball Valve with Side Tap		19	8483-35	1/4" Bulk Head Union	
<b>MAIN GAS TRAIN COMPONENT - REGULATOR/COCK KITS</b>				20	8409-10	Silicone Boot- Orange- for covering Spark Cable to Rod Connection	
10A	6773-60	Regulator/Cock Kit 1"		21	6764-00	Sealing Gland Nut Kit - Spark Rod Retainer Assembly with O-Ring Seal - (see note #1)	
10B	6773-00	Regulator/Cock Kit 1-1/4"		22	8432-07	Spark Rod Retainer O-Rings ONLY	
10C	6773-10	Regulator/Cock Kit 1-1/2"		23	6725-50	Spark Rod and Insulator Assembly	
10D	6773-20	Regulator/Cock Kit 2"		24	6747-00	Vent Tube (Used w/ Diaphragm Gas Valves)	
<b>MAIN GAS TRAIN COMPONENT - 24V SAFETY VALVES (Normally closed) (see note # 4)</b>				25	6725-90	Pilot with Flamerod and Spark Rod Assemblies mounted. All UL burners with Diaphragm Valve and all CUL burners with Motorized Valve.	
11A	8402-36	1" Solenoid Valve		26	6720-90	Mounting Clamp for Flamerod Assembly	
11B	8402-42	1-1/4" Solenoid Valve		27	6717-00	Flamerod and Insulator Assembly	
11C	8402-43	1-1/2" Solenoid Valve		28	8483-33	1/4 MPT X 3/8 Tube Str. Connector	
11D	8402-44	2" Solenoid Valve					
<b>FIRING RATE CONTROLS - BUTTERFLY VALVES (see note # 3)</b>							
12A	2933-50	On-Off Butterfly Valve Assembly 1"					
12B	2933-51	On-Off Butterfly Valve Assembly 1-1/4"					
12C	2933-52	On-Off Butterfly Valve Assembly 1-1/2"					
12D	2933-53	On-Off Butterfly Valve Assembly 2"					

# Unipower GB Series Parts List

Item	Part #	Description	N/S = Not Shown
<b>DRAWER ASSEMBLY COMPONENT</b>			
29	8484-72	Strain Relief SR-4K-1 Straight	
30	7122-90	Peep Sight Assembly w/ Gasket & Mounting Screws	
31	8457-46	Strain Relief Bushing for Spark Cable	
N/S	6717-91	Flamerod Wire Replacement Kit	
N/S	8509-05	Spark Cable	

## TEE KITS Note: Straight Kits Not Available

32A	6766-00	Nat G56B gas #60 Dr. (.040), air #26 Dr. (.147)	
32B	6766-01	Nat G57B gas #60 Dr. (.040), air #30 Dr. (.128)	
32C	6766-02	Nat G58B gas #55 Dr. (.052), air #26 Dr. (.147)	
32D	6766-05	Prop G56B gas #64 Dr. (.036), air #26 Dr. (.147)	
32E	6766-06	Prop G57B gas #64 Dr. (.036), air #30 Dr. (.128)	
32F	6766-07	Prop G58B gas #56 Dr. (.046), air #26 Dr. (.147)	

## BLOWER HOUSING

33	6724-10	Blower Inlet Screen	
34A	6755-50	Air Shutter—Models G56B & G57B	
34B	3246-08	Air Shutter—Models G58B & G69B	
35	6734-01	Air Shutter Shaft	
36	3152-01	Quadrant—for Air Shutter Adjustment	
N/S	8400-10	Pilot Pressure Regulator, 1/4" Natural and Propane (1/2 PSI maximum inlet pressure)	
N/S	3185-00	Pilot Pressure Regulator, 1/4" Ball Valve, Pilot 5/16" Tubing	

Item	Part #	Description	N/S = Not Shown
<b>ACCESSORIES AND OTHER CONTROLS</b>			
37A	8425-19	Blower Air Switch (Chicago Safety Prod. #SMP; Tri-delta #FP4039)	
37B	8425-22	Blower Air Switch Canadian Versions	
N/S	8406-68	DPST Relay (Aromat: JH2A-W-AC120V- Q, Potter Brumfield: T9S7A22-120)	
N/S	8425-42	High Gas Pressure Switch (see note # 2)	
N/S	8425-43	Low Gas Pressure Switch (see note # 2)	
N/S	8423-03	On-Off Toggle Switch (CH7500K14)	

## TERMINAL STRIPS

38	8408-42	10 Terminal Strip	
39	8408-78	3 Terminal Strip	
40	8429-57	Ignition Controller	

## Not Shown

### TRANSFORMER

8447-27 75VA Transformer **Note: If transformer is not available, it may be substituted by either 8447-31 or 8447-32. Then see details for alternate transformer mounting configurations. Refer to wiring diagram 6900-84 for alternate wiring schematics. Call the factory for assistance.**

## NOTES

- Starting in July 1980 (Date Code 3080), the one piece Spark Rod Assembly Retainer was superseded by a three piece Retainer Assembly which features an O-Ring seal to compensate for any irregularities in the Spark Rod size or shape. When replacing the Spark Rod, the O-Ring and the one piece Retainer (on burners where it is still in use) should also be replaced.
- Replacement individual High or Low Gas Pressure Switches may be a different make and have a different physical configuration than that previously supplied, but the mounting and wiring will be the same. Request Bulletin 8449-88 for terminal identification.
- Replacement of the unavailable Push-Pull Input Adjusters can be accomplished by substituting a butterfly valve assembly. The BF assembly is a straight line design, whereas the Push-Pull is a right angle design. This will require further replacement adjustments, as valve train pipe fittings will have to be rearranged. Be sure to carry out the same general arrangement: BF assembly between Automatic Safety Valve and burner chassis.
- Dual Main Valves as standard construction April 1, 1994 (UL 795 requirement)



Midco<sup>®</sup>  
INTERNATIONAL

Midco<sup>®</sup> International Inc. - 4140 West Victoria Street - Chicago, Illinois 60646 - toll free: 866 705 0514  
tel: 773.604.8700 - fax: 773.604.4070 - web: www.midcointernational.com - e-mail: sales@midcointernational.com



1021-B  
8472 61  
Printed in USA