

## EC200/300 Transformer Replacement Kit #5734-51 120/208/240 or 115/230V Primary, 24V Secondary, 40VA, 50/60 Hz

**⚠ CAUTION:** Read and understand this service bulletin thoroughly before starting. Only a trained, experienced service technician should attempt this service procedure.

The original transformer is no longer available. The replacement transformer in this kit ...

- May not be identical to the one you are replacing.
- Has a 40VA rating. When replacing a 20VA or 30VA transformer on earlier burners, the increased volt amp rating will not affect the burner operation or any associated controls and is electrically interchangeable.
- May have a different mounting plate with different mounting hole locations. On the replacement transformer, the center line to center line spread of the mounting holes is either 3.125" (3-1/8") or 2.813" ± 0.31". It may be necessary to provide a new mounting hole on the burner. For further assistance, see "Mounting Template" - *Figure 1 or 2*.
- The replacement transformer must be secured to the burner chassis to insure that the transformer is grounded.
- Includes multiple primary wires to allow use with different voltages. Please use caution in selecting the correct wires for your application! For further assistance, please see "Transformer Wire Color Chart" - *Chart 1*.

**⚠ DANGER:** Before attempting service, turn off gas to burner and turn off power to burner at the disconnect switch (not at burner on-off switch. Failure to do so could result in personal injury or death.)

1. Compare the replacement transformer with installed original transformer noting wire lead colors and best position to utilize new wire lead length. If, wire colors are different, correct wiring diagram on the unit. If, doubt exists about the connections, then tag and mark old wire leads and/or terminal connections.

**Note:** The replacement transformer is supplied without wire terminals. Closed end connectors are supplied, which can be used to splice the replacement transformer to the (old) transformer leads (if required).

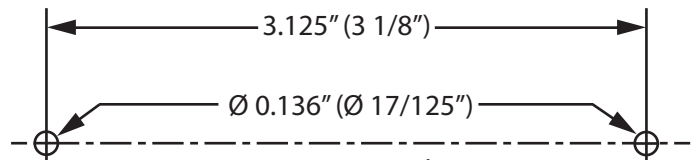
2. Disconnect and remove the installed original transformer and discard.
3. Confirm position of the replacement transformer will not cause interference when closing the burner enclosure or access cover.

**Note:** When needed use the 4" x 4" Raised Box Cover supplied with the kit (If not needed, discard). If unit is 240V replace wiring diagram with supplied 240V wiring diagram label (If not, discard).

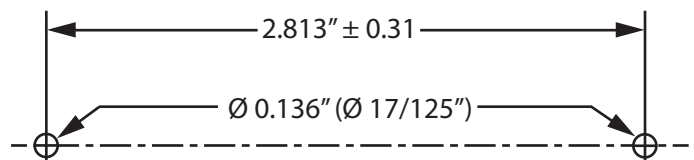
4. If necessary, drill an additional Ø 0.136" (Ø 17/125") mounting hole to accommodate the distance between the mounting holes in the (new) transformer.
5. Install (new) replacement transformer and connect wires to proper terminals as described in step 1 and note above.
6. Turn on gas to burner and turn on power at disconnect switch.
7. Refer to lighting instructions and cycle burner. Observe for normal operating sequences.

Transformer Wire Color Chart		Old	Hartland	New Foster
Secondary	24 VAC	YEL YEL	BLU YEL	BLU YEL
Primary	COM	BLK	BLK	WHT & BLU
	120 VAC	WHT	WHT	BRN & BLK
OR	208 VAC	BLU	RED	WHT
	240 VAC	RED	ORN	BRN & BLU BLK
	115V			
	230V			

Chart 1



Mounting Template  
Figure 1 - Hartland Transformer



Mounting Template  
Figure 2 - Foster Transformer

**AVOID ERROR IN PARTS SELECTION.** When ordering use complete MIDCO Part Number and Description. Furnish Burner Model Number, Bill of Material Number and Serial Number (if available) from the specification plate found on the product.

**IMPORTANT:** Availability of parts as well as specifications are subject to change without notice. Please consult factory for item availability.

**SAFETY INFORMATION TERMS:** The following terms are used to identify hazards, safety precaution of special notations and have standard meanings throughout this manual. They are printed in all capital letters using a bold type face as shown below, and preceded by the exclamation mark symbol. When you see the safety alert symbol and one of the safety information terms as shown below, be aware of the hazard potential.



- DANGER:** Identifies the most serious hazards which will result in severe personal injury or death.
- WARNING:** Signifies a hazard that could result in personal injury or death.
- CAUTION:** Identifies unsafe practices which would result in minor personal injury or product and property damage.



**Midco**<sup>®</sup>  
INTERNATIONAL

Midco<sup>®</sup> International Inc.  
4140 West Victoria Street  
Chicago, Illinois 60646  
toll free 866.705.0514  
tel 773.604.8700  
fax 773.604.4070  
web www.midcointernational.com  
e-mail sales@midcointernational.com