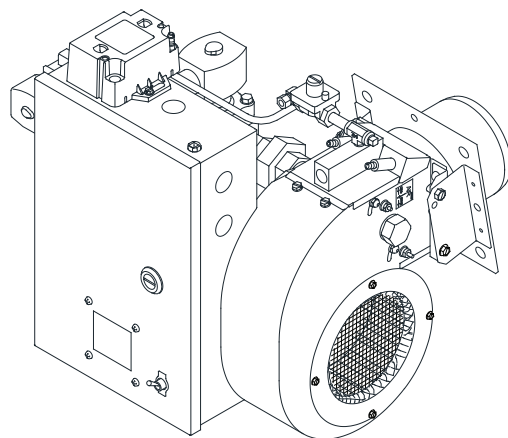


Replacement Parts List

Incinomite Model J81A-3 & J121A-3



*Installation Manual 8470 70
Date code 293 or later*

- Supersedes Model J81-3 and J121-3 which featured a horizontal style control box and wire wound spark transformer.
- Features a modified control box and Honeywell Q652 solid state Spark Generator
- Model J121A Ignitor Assembly features an air adjustment screw to modify gas/air ratios for improved pilot light offs with air shutters full open.
- First production May 10, 1993 (date code 1993).
- After approximately 6 months, date code 4693, the Primary Control was converted from Honeywell RA890F to Honeywell RM7890.



Midco®
INTERNATIONAL

Midco® International Inc.
4140 West Victoria Street
Chicago, Illinois 60646
toll free 866.705.0514
tel 773.604.8700
fax 866.580.8700
web www.midcointernational.com
e-mail sales@midcointernational.com

AVOID ERROR IN PARTS SELECTION. When ordering use complete MIDCO Part Number and Description. Furnish Burner Model Number, Bill of Material Number and Serial Number (if available) from the specification plate found on the product.

IMPORTANT: Availability of parts as well as specifications are subject to change without notice. Please consult factory for item availability.

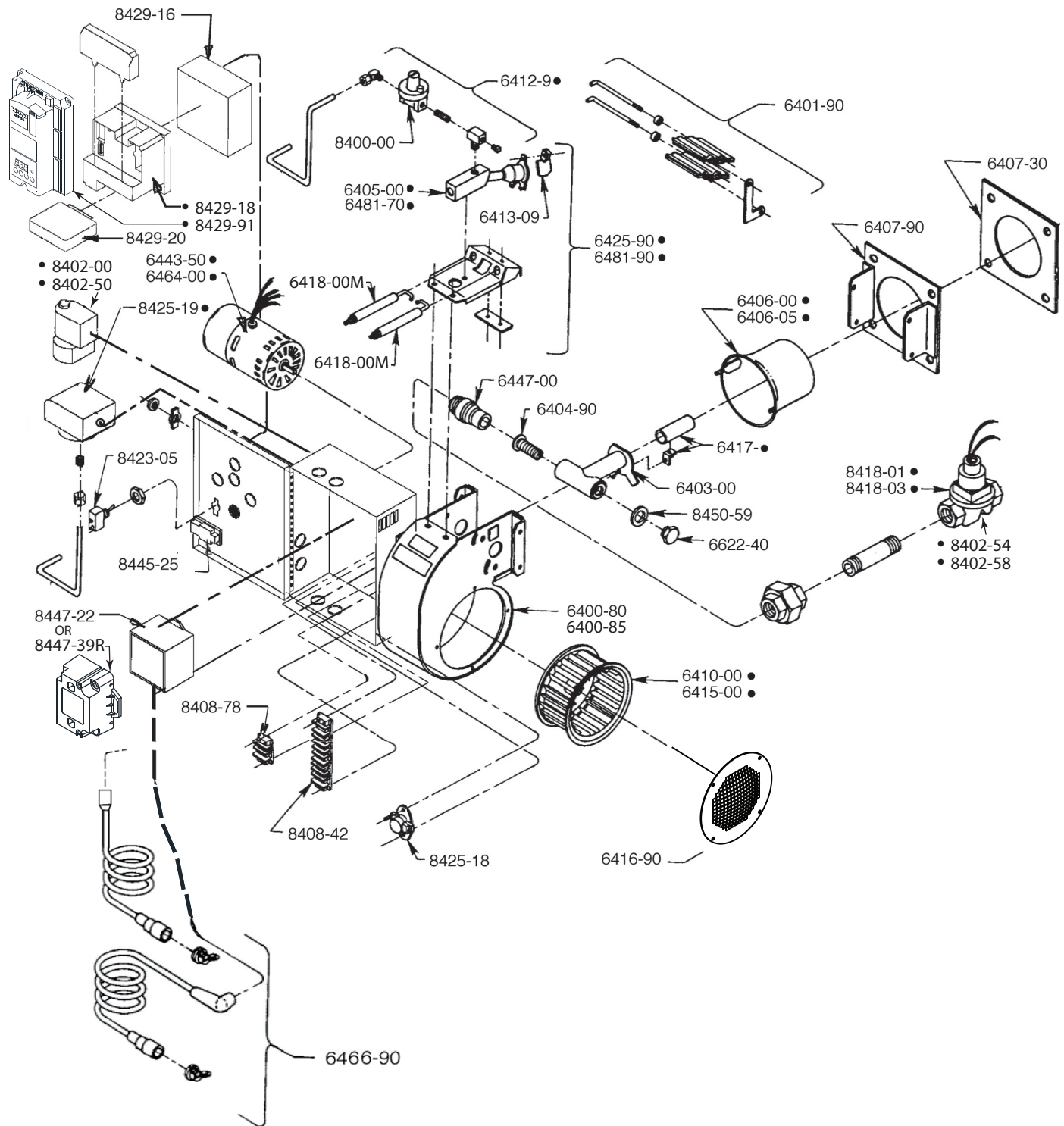


As an ISO 9001:2008 certified company, we proudly design, manufacture and assemble our products in Chicago, Illinois, USA.

Quality Designed for Proven Performance

822
8472 59
Printed in USA

Exploded View J81A-3 & J121A-3



J81A-3 & J121A-3 Parts List

Part #	Description	Part #	Description
6400-80	Blower Housing Replacement Kit - J81A Series (order Blower Wheel, Motor, Shutters, Inlet Screen, Manifold, etcetera, separately)	6447-00	Input Stop Nipple
6400-85	Blower Housing Replacement Kit - J121A Series (order Blower Wheel, Motor, Shutters, Inlet Screen, Manifold, etcetera, separately)	6464-00	Motor Shaded Pole J81A-3 (Fasco U63-7163- 7601)
6401-90	Shutter Replacement Kit	6466-90	Electrode Wires, Boots and Strain Reliefs
6403-00	Manifold	6481-70	Ignitor Gas inlet Block, Tube and Ignitor Tip Assembly—J121A-3
6404-90	Input Adjuster Screw Assembly	6481-90	Ignitor Assembly—J121A-3
6405-00	Ignitor Gas Inlet Block, Tube and Ignitor Tip Assembly—J81A-3	6622-40	Input Adjuster Cap
6406-00	Blast Tube—J121A-3	8400-00	Ignitor Regulator 1/8" NPT (Maxitrol RV12, RV12LT)
6406-05	Blast Tube—J81A-3	8402-00	1/8" NPT Ignitor Solenoid Valve—120/1/60
6407-30	Flange Gasket	8402-50	ASCO 1/8" NPT Ignitor Solenoid Valve 120/1/60
6407-90	Mounting Flange Replacement Kit (order Gasket separately)	8402-54	ASCO 3/4" NPT Gas Valve 120/1/60- J81A-3
6410-00	Blower Wheel—J81A-3	8402-58	ASCO 1" NPT Gas Valve 120/1/60-J121A-3
IGNITOR CONTROL PIPING		8408-42	10 position Terminal Strip
Assembly includes Brass Orifice Tee (with drilled Orifice), Pressure Tap, Regulator and Compression Fitting		8408-78	3-position Terminal Strip
6412-95	J81A-3 NATURAL— #55 Drill (.052)	8418-01	3/4" NPT Gas Valve 120/1/60—J181A-3 (ITT K3A452S)
6412-96	J121A-3 NATURAL— #50 Drill (.070)	8418-03	1" NPT Gas Valve 120/1/60—J121A-3 (ITT K3A462S)
6412-97	J81A-3 PROPANE — #58 Drill (.042)	8423-05	On-Off Toggle Switch
6412-98	J121A-3 PROPANE — #52 Drill (.063)	8425-18	Thermal Switch (T-O-D 60T-13-203420)
6413-09	Ground Barrier Kit	8425-19	Blower Air Switch—J121A-3
6415-00	Blower Wheel—J121A-3	8429-16	Subbase for Flame Safeguard (M-HQ7800B)
6416-90	Inlet Ring and Screen Replacement Kit	8429-18	Flame Safeguard (M-H RM7890A)
6417-50	Main Gas Port and Tube Kit—J81A-3 PROPANE	8429-20	Rectification Amplifier 0.8 second response time (M-H R7847A)
6417-52	Main Gas Port and Tube Kit—J81A-3 NATURAL or J121A-3 PROPANE	8429-91	Siemens Controller/Flame Safeguard
6417-54	Main Gas Tube Kit—J121A-3 NATURAL	8445-25	Door Latch
6418-00M	Electrode (spark or flame) - 2 required	8447-22	Ignitor Spark Generator (M-H Q652B)
6425-90	Ignitor Assembly—J81A-3	8447-39R	Allanson Spark Transformer Repair Kit
6443-50 ¹	Motor 1/6 HP 115/230/1/50/60 TENV - J121A- 3 only	8450-59	Input Adjuster Sealing Gasket
		2030701 ²	PROPANE Conversion Kit - J81A-3
		2030702 ²	NATURAL Conversion Kit - J81A-3
		2030801 ²	PROPANE Conversion Kit - J121A-3
		2030802 ²	NATURAL Conversion Kit - J121A-3

NOTES

1. Up to September 17, 1993 (date code 3793), a single voltage 115V motor was standard construction. Starting September 20, 1993 (date code 3893), a dual voltage 115/230V motor became standard construction. Replacement motor will be dual voltage. (Instruction bulletin 8470-32 is included.)

2. Not illustrated.



As an ISO 9001:2008 certified company, we proudly design, manufacture and assemble our products in Chicago, Illinois, USA.

Midco® International Inc. - 4140 West Victoria Street - Chicago, Illinois 60646 - toll free: 866 705 0514
tel: 773.604.8700 - fax: 866.580.8700 - web: www.midcointernational.com - e-mail: sales@midcointernational.com

