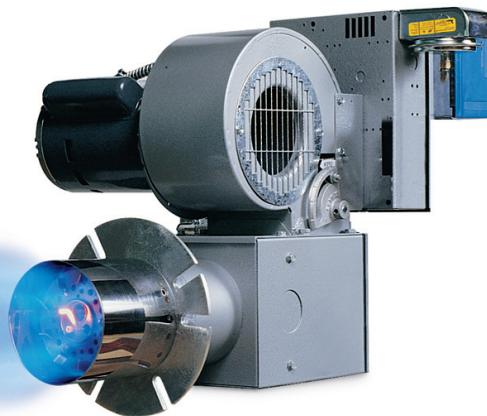


Replacement Parts List Unipower GB Series



*Installation and Service Manual - 8470-86
Date Code - April 2000*

- First Construction 1994; date code 3794 (37th week, 1994).



Midco®
INTERNATIONAL

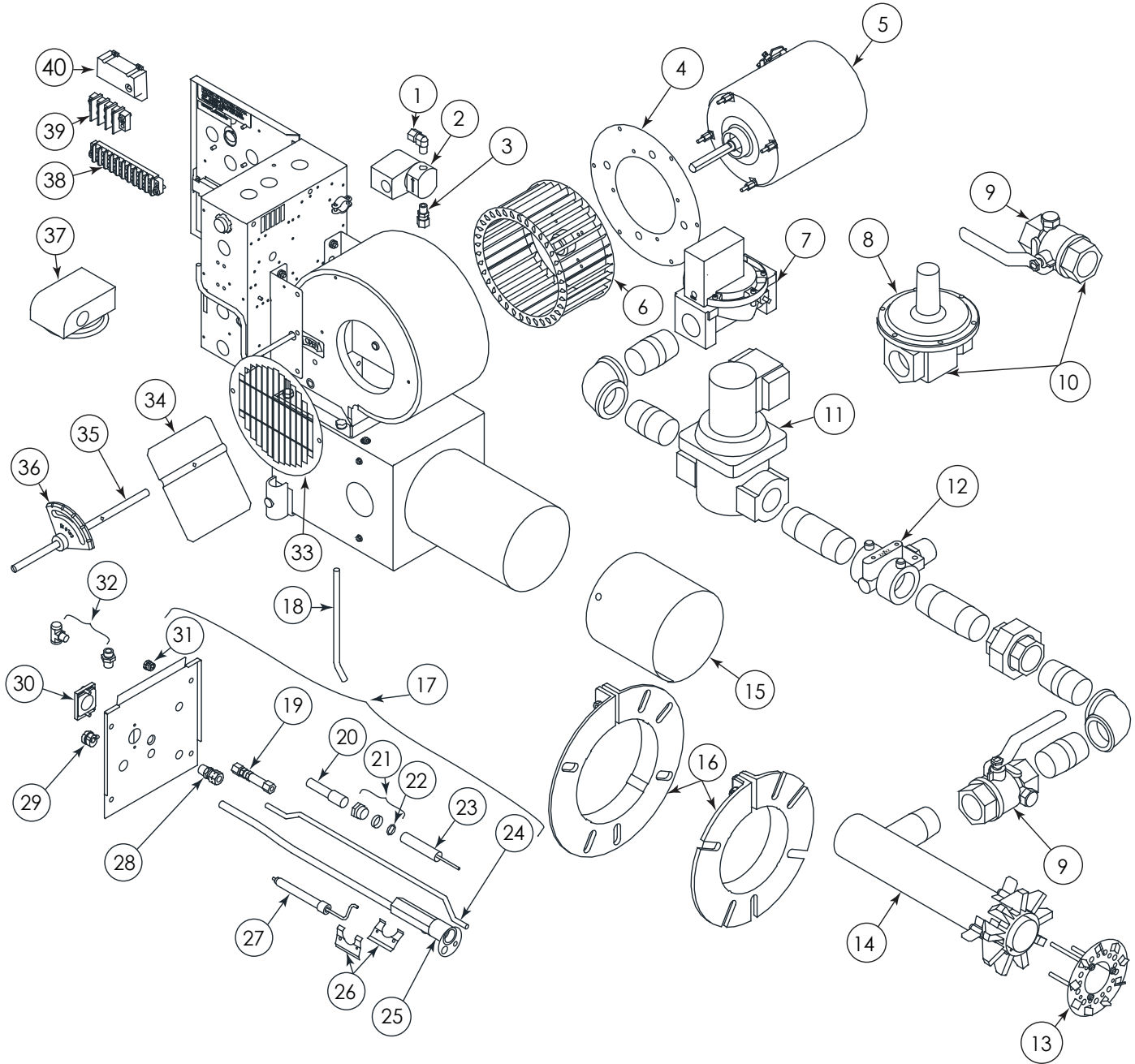
Midco® International Inc.
4140 West Victoria Street
Chicago, Illinois 60646
toll free 866.705.0514
tel 773.604.8700
fax 773.604.4070
web www.midcointernational.com
e-mail sales@midcointernational.com

AVOID ERROR IN PARTS SELECTION. When ordering use complete MIDCO Part Number and Description. Furnish Burner Model Number, Bill of Material Number and Serial Number (if available) from the specification plate found on the product.

IMPORTANT: Availability of parts as well as specifications are subject to change without notice. Please consult factory for item availability.



Exploded View - GB Series



Item	Part #	Description	N/S = Not Shown
PILOT SHUT OFF VALVE			
1	8483-01	1/8" M X 5/16 T Compression Elbow	
2	8402-37	Gas Safety Shut-Off Valve-1/8" NPT; 24V/1/60	
3	8483-30	5/16" O.D. Tube X 1/8" NPTM Straight Fitting	
MOTOR MOUNTING PLATE			
4	3197-50	Motor Mounting Plate—Used on 56C or 66C Frames (ref. Models G57B, G58B & G69B. Became production item on G56B Models approximately July 1989).	

Item	Part #	Description	N/S = Not Shown
BLOWER MOTORS - 1-Phase, 48M of J48Y Frame (3450 RPM, 1/2" Shaft) Open Drip Proof			
5A	6728-90	G56B 1/6 HP 115/230/1/60/50	
5B	8437-31	G57B 1/3 HP 115/230/1/60	
5C	8437-15	G58B 1/2 HP 115/230/1/60	
5D	8437-25	G69B 3/4 HP 115/230/1/60	
BLOWER MOTORS - 3-Phase, 56C Frame (3450 RPM, 5/8" Shaft)			
5E	8440-19	G58B 1/2 HP 20/230/460/3/60 TENV Motor	
5F	8440-16	G69B 3/4 HP 208/230/460/3/60 TENV Motor	

Unipower GB Series Parts List

Item	Part #	Description	N/S = Not Shown	Item	Part #	Description	N/S = Not Shown
BLOWER WHEELS				BURNER CHASSIS			
6A	6748-00	G56B 5-1/4" dia x 3-1/2" W (1/2" Bore)		13A	6712-05	Flame Retention Plate 5" w/ Mounting Screws—Models G56B, G57B & G58B	
6B	3427-50	G57B 6-5/16" dia x 4" W (5/8" Bore)		13B	6712-12	Flame Retention Plate 4.9" w/ Mounting. Screws used on OEM models consult factory for applications	
6C	3627-50	G58B & G69B-7" dia x 3-1/2" W (5/8" Bore)		13C	6713-05	Flame Retention Plate 6" w/ Mounting Screws -- Model G69B	
MAIN GAS TRAIN COMPONENT - 24V V48A DIAPHRAGM VALVES				BURNER CHASSIS - NOZZLES			
7A	8419-54	1-1/4" V48A Diaphragm Valve		14A	6735-50	Manifold Weldment (5x1) Nozzle - G56B and G57B Nat & LP Gas and G58B LP Gas	
7B	8419-55	1-1/2" V48A Diaphragm Valve		14B	6735-00	Manifold Weldment (5x2) Nozzle G58B Nat Gas	
7C	8419-56	2" V48A Diaphragm Valve		14C	6740-00	Manifold Weldment (6x2) Nozzle G69B Nat Gas	
MAIN GAS TRAIN COMPONENT - PRESSURE REGULATORS - Maxitrol RV Series				14D 6740-05 Manifold Weldment (6x1) Nozzle G69B LP Gas			
8A	8416-33	RV61 1" Maxitrol Gas Pressure Regulator		BURNER CHASSIS - SLEEVES & FLANGES			
8B	8416-02	RV61 1-1/4" Maxitrol Gas Pressure Regulator		15A	6736-00	Adj Alloy 5"x 5" Sleeve- G56B, G57B & G58B	
8C	8416-05	RV81 1-1/2" Maxitrol Gas Pressure Regulator		15B	6741-00	Adj Alloy 6" Sleeve- G69B	
8D	8416-08	RV91 2" Maxitrol Gas Pressure Regulator		16A	2020300	5" Mounting Flange Kit G56B,G57B & G58B	
8E	8416-11	RV111 2-1/2" Maxitrol Gas Pressure Regulator		16B	2020800	6" Mounting Flange Kit G69B	
MAIN GAS TRAIN COMPONENT - BALL VALVES - Side Taps				BURNER CHASSIS - DRAWER ASSEMBLIES			
9A	8404-23	1" NPT Ball Valve with Side Tap		17	6755-20	Drawer Assembly with Pilot and Vent Tube. Vent Tube is required when burner is equipped with a V48A Diaphragm Type Main Gas Valve. Order Pilot Gas and Air Orifices separately.	
9B	8404-24	1-1/4" NPT Ball Valve with Side Tap		18	6729-91	Pilot Air Tube-Blower Housing to Drawer Assembly	
9C	8404-25	1-1/2" NPT Ball Valve with Side Tap		19	8483-35	1/4" Bulk Head Union	
9D	8404-26	2" NPT Ball Valve with Side Tap		20	8409-10	Silicone Boot- Orange- for covering Spark Cable to Rod Connection	
MAIN GAS TRAIN COMPONENT - REGULATOR/COCK KITS				21 6764-00 Sealing Gland Nut Kit - Spark Rod Retainer Assembly with O-Ring Seal - (see note #1)			
10A	6773-00	Regulator/Cock Kit 1-1/4"		22	8432-07	Spark Rod Retainer O-Rings ONLY	
10B	6773-20	Regulator/Cock Kit 2"		23	6725-50	Spark Rod and Insulator Assembly	
MAIN GAS TRAIN COMPONENT - 24V SAFETY VALVES (Normally closed) (see note # 4)				24 6747-00 Vent Tube (Used w/ Diaphragm Gas Valves)			
11A	8402-36	1" Solenoid Valve		25	6725-90	Pilot with Flamerod and Spark Rod Assemblies mounted. All UL burners with Diaphragm Valve and all CUL burners with Motorized Valve.	
11B	8402-42	1-1/4" Solenoid Valve		26	6720-90	Mounting Clamp for Flamerod Assembly	
11C	8402-43	1-1/2" Solenoid Valve		27	6717-00	Flamerod and Insulator Assembly	
11D	8402-44	2" Solenoid Valve		28	8483-33	1/4 MPT X 3/8 Tube Str. Connector	
FIRING RATE CONTROLS - BUTTERFLY VALVES (see note # 3)							
12A	2933-50	On-Off Butterfly Valve Assembly 1"					
12B	2933-51	On-Off Butterfly Valve Assembly 1-1/4"					
12C	2933-52	On-Off Butterfly Valve Assembly 1-1/2"					
12D	2933-53	On-Off Butterfly Valve Assembly 2"					

Unipower GB Series Parts List

Item	Part #	Description	N/S = Not Shown
DRAWER ASSEMBLY COMPONENT			
29	8484-72	Strain Relief SR-4K-1 Straight	
30	7122-90	Peep Sight Assembly w/ Gasket & Mounting Screws	
31	8457-46	Strain Relief Bushing for Spark Cable	
N/S	6717-91	Flamerod Wire Replacement Kit	
N/S	8509-05	Spark Cable	

TEE KITS Note: Straight Kits Not Available

32A	6766-00	Nat G56B gas #60 Dr. (.040), air #26 Dr. (.147)	
32B	6766-01	Nat G57B gas #60 Dr. (.040), air #30 Dr. (.128)	
32C	6766-02	Nat G58B gas #55 Dr. (.052), air #26 Dr. (.147)	
32D	6766-05	Prop G56B gas #64 Dr. (.036), air #26 Dr. (.147)	

BLOWER HOUSING

33	6724-10	Blower Inlet Screen	
34A	6755-50	Air Shutter—Models G56B & G57B	
34B	3246-08	Air Shutter—Models G58B & G69B	
35	6734-01	Air Shutter Shaft	
36	3152-01	Quadrant—for Air Shutter Adjustment	
N/S	8400-10	Pilot Pressure Regulator, 1/4" Natural and Propane (1/2 PSI maximum inlet pressure)	
N/S	3185-00	Pilot Pressure Regulator, 1/4" Ball Valve, Pilot 5/16" Tubing	

Item	Part #	Description	N/S = Not Shown
ACCESSORIES AND OTHER CONTROLS			
37A	8425-19	Blower Air Switch (Chicago Safety Prod. #SMP; Tri-delta #FP4039)	
37B	8425-22	Blower Air Switch Canadian Versions	
N/S	8406-68	DPST Relay (Aromat: JH2A-W-AC120V- Q, Potter Brumfield: T9S7A22-120)	
N/S	8425-73	High Gas Pressure Switch (see note # 2)	
N/S	8425-62	Low Gas Pressure Switch (see note # 2)	
N/S	8423-03	On-Off Toggle Switch (CH7500K14)	

TERMINAL STRIPS

38	8408-42	10 Terminal Strip	
39	8408-78	3 Terminal Strip	
40	8429-57	Ignition Controller	

Not Shown

TRANSFORMER

8447-27 75VA Transformer **Note: If transformer is not available, it may be substituted by either 8447-31 or 8447-32. Then see details for alternate transformer mounting configurations. Refer to wiring diagram 6900-84 for alternate wiring schematics. Call the factory for assistance.**

NOTES

- Starting in July 1980 (Date Code 3080), the one piece Spark Rod Assembly Retainer was superseded by a three piece Retainer Assembly which features an O-Ring seal to compensate for any irregularities in the Spark Rod size or shape. When replacing the Spark Rod, the O-Ring and the one piece Retainer (on burners where it is still in use) should also be replaced.
- Replacement individual High or Low Gas Pressure Switches may be a different make and have a different physical configuration than that previously supplied, but the mounting and wiring will be the same. Request Bulletin 8449-88 for terminal identification.
- Replacement of the unavailable Push-Pull Input Adjusters can be accomplished by substituting a butterfly valve assembly. The BF assembly is a straight line design, whereas the Push-Pull is a right angle design. This will require further replacement adjustments, as valve train pipe fittings will have to be rearranged. Be sure to carry out the same general arrangement: BF assembly between Automatic Safety Valve and burner chassis.
- Dual Main Valves as standard construction April 1, 1994 (UL 795 requirement)



Midco[®]
INTERNATIONAL

Midco[®] International Inc. - 4140 West Victoria Street - Chicago, Illinois 60646 - toll free: 866 705 0514
tel: 773.604.8700 - fax: 773.604.4070 - web: www.midcointernational.com - e-mail: sales@midcointernational.com



923
8472 61
Printed in USA