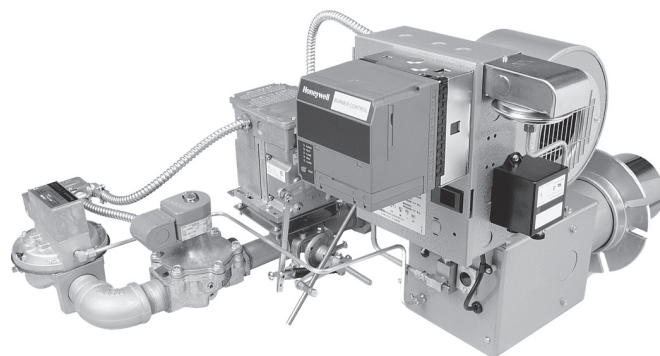


Replacement Parts List Unipower G series



Installation and Service Manual - 8449-06
Date Code - April 2000

- First Construction October 1976; date code 4176 (41st week, 1976).
- Push-Pull Input Adjusters first used June 1980; date code 2380 (23rd week, 1980).
- Push-Pull Input Adjusters discontinued approximately June 1989; date code 2489 (24th week, 1989)-See Note 5.



Midco®
INTERNATIONAL

Midco® International Inc.
4140 West Victoria Street
Chicago, Illinois 60646
toll free 866.705.0514
tel 773.604.8700
fax 773.604.4070
web www.midcointernational.com
e-mail sales@midcointernational.com

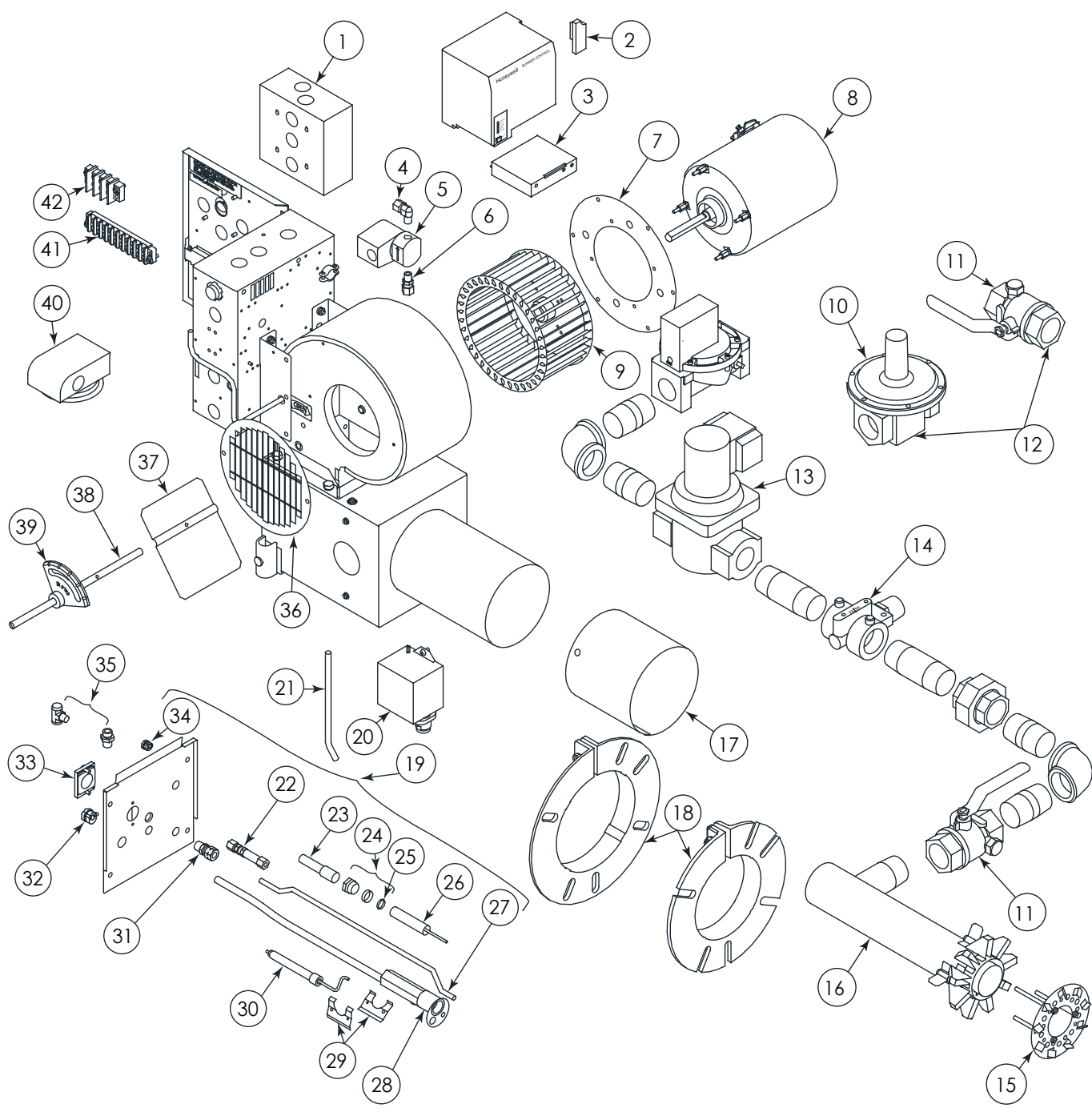
AVOID ERROR IN PARTS SELECTION. When ordering use complete MIDCO Part Number and Description. Furnish Burner Model Number, Bill of Material Number and Serial Number (if available) from the specification plate found on the product.

IMPORTANT: Availability of parts as well as specifications are subject to change without notice. Please consult factory for item availability.



Quality Designed for Proven Performance

Exploded View - G Series



Item	Part #	Description	N/S = Not Shown	Item	Part #	Description	N/S = Not Shown
WIRING BASE (See Note # 7)				BLOWER WHEELS			
1	8429-16	Q7800B Sub-Base for RM7895		9A	6748-00	G56 5-1/4" dia x 3-1/2" W (1/2" Bore)	
CHASSIS (Order plug-in components separately)				9B	3427-50	G57 6-5/16" dia x 4" W (5/8" Bore)	
Chassis are no Longer Available - call the Factory				9C	3627-50	G58 & G69-7" dia x 3-1/2" W (5/8" Bore)	
	8429-19	RM7895A Controller and		MAIN GAS TRAIN COMPONENT - On-Off or Full Mod			
	8429-34	RM7895C 1020 Controller		MOTORIZED VALVE BODY -			
PLUG-IN PURGE TIMER (see note # 4 & # 7)				V5055A without "Proof of Closure" Switch			
2A	8429-22	ST7800 for RM7895 30 seconds		N/S	8418-32	1"	
2B	8429-25	ST7800 for RM7895 90 seconds		MAIN GAS TRAIN COMPONENT -			
PLUG-IN AMPLIFIER				MOTORIZED VALVE ACTUATOR			
3	8429-27	R7847A Rect Amplifier		N/S	8418-31	V4055A On-Off w/out "Proof of Closure" Switch	
PILOT SHUT OFF VALVE				MAIN GAS TRAIN COMPONENT -			
4	8483-01	1/8" M X 5/16 T Compression Elbow		SOLENOID VALVES			
5	8402-00	Gas Safety Shut-Off Valve-1/8" NPT; 120/1/60		Vent Valves (normally open)			
6	8483-30	5/16" O.D. Tube X 1/8" NPTM Straight Fitting		N/S	8402-31	1" Solenoid Valves (normally open)	
MOTOR MOUNTING PLATE				MAIN GAS TRAIN COMPONENT -			
7	3197-50	Motor Mounting Plate—Used on 56C or 66C Frames (ref. Models G57, G58 & G69. Became production item on G56 Models approximately July 1989).		PRESSURE REGULATORS - Maxitrol RV Series			
BLOWER MOTORS - 1-Phase, 48M of J48Y Frame (3450 RPM, 1/2" Shaft) Open Drip Proof				10A	8416-33	RV61 1" Maxitrol Gas Pressure Regulator	
8A	6728-90	G56 1/6 HP 115/230/1/60/50		10B	8416-02	RV61 1-1/4" Maxitrol Gas Pressure Regulator	
8B	8437-31	G57 1/3 HP 115/230/1/60		10C	8416-05	RV81 1-1/2" Maxitrol Gas Pressure Regulator	
8C	8437-15	G58 1/2 HP 115/230/1/60		10D	8416-08	RV91 2" Maxitrol Gas Pressure Regulator	
8D	8437-25	G69 3/4 HP 115/230/1/60		10E	8416-11	RV111 2-1/2" Maxitrol Gas Pressure Regulator	
BLOWER MOTORS - 3-Phase, 56C Frame (3450 RPM, 5/8" Shaft)				MAIN GAS TRAIN COMPONENT -			
8E	8440-19	G58 1/2 HP 20/230/460/3/60 TENV Motor		BALL VALVES - Side Taps			
8F	8440-16	G69 3/4 HP 208/230/460/3/60 TENV Motor		11A	8404-23	1" NPT Ball Valve with Side Tap	
BLOWER MOTORS - 3-Phase, 56C Frame (3450 RPM, 5/8" Shaft)				11B	8404-24	1-1/4" NPT Ball Valve with Side Tap	
BLOWER MOTORS - 3-Phase, 56C Frame (3450 RPM, 5/8" Shaft)				11C	8404-25	1-1/2" NPT Ball Valve with Side Tap	
BLOWER MOTORS - 3-Phase, 56C Frame (3450 RPM, 5/8" Shaft)				11D	8404-26	2" NPT Ball Valve with Side Tap	
BLOWER MOTORS - 3-Phase, 56C Frame (3450 RPM, 5/8" Shaft)				MAIN GAS TRAIN COMPONENT -			
BLOWER MOTORS - 3-Phase, 56C Frame (3450 RPM, 5/8" Shaft)				REGULATOR/COCK KITS			
BLOWER MOTORS - 3-Phase, 56C Frame (3450 RPM, 5/8" Shaft)				12A	6773-00	Regulator/Cock Kit 1-1/4"	
BLOWER MOTORS - 3-Phase, 56C Frame (3450 RPM, 5/8" Shaft)				12B	6773-20	Regulator/Cock Kit 2"	

Exploded View

Item	Part #	Description	N/S = Not Shown	Item	Part #	Description	N/S = Not Shown
MAIN GAS TRAIN COMPONENT -				BURNER CHASSIS - DRAWER ASSEMBLIES			
SAFETY VALVES (Normally closed)				19A 6755-10 Drawer Assembly with Pilot and Vent Tube. Vent Tube is required when burner is equipped with a V48A Diaphragm Type Main Gas Valve. Order Pilot Gas and Air Orifices separately.			
13A	8418-03	1" Solenoid Valve		19B 6755-11 Drawer Assembly with Pilot. Order Pilot Gas and Air Orifices Separately. Used on All UL Burners with Motorized Valve.			
13B	8402-06	1-1/4" Solenoid Valve		19C 6755-13 Drawer Assembly with Pilot. Used on all CUL Burners with V48A Diaphragm Type Main Gas Valve Order Pilot Gas and Air Orifices separately.			
13C	8402-07	1-1/2" Solenoid Valve					
FIRING RATE CONTROLS -				PILOT COMPONENTS and ACCESSORIES			
BUTTERFLY VALVES (see note # 5)				20A 8447-22 Ignition Trans 120/1/60 12,000 V Secondary - Honeywell Q652B			
14A	2933-50	On-Off Butterfly Valve Assembly 1"		20B 8447-11 Ignition Transformer -- 120/1/60; 6000 V Secondary - Allanson 1092-S			
14B	2933-51	On-Off Butterfly Valve Assembly 1-1/4"		21 6729-91 Pilot Air Tube-Blower Housing to Drawer Assembly			
14C	2933-52	On-Off Butterfly Valve Assembly 1-1/2"		22 8483-35 1/4" Bulk Head Union			
14D	2933-53	On-Off Butterfly Valve Assembly 2"		23 8409-10 Silicone Boot- Orange- for covering Spark Cable to Rod Connection			
FIRING RATE CONTROLS -				24 6764-00 Sealing Gland Nut Kit - Spark Rod Retainer Assembly with O-Ring Seal - (see note #1)			
MOTORIZED BUTTERFLY VALVES				25 8432-07 Spark Rod Retainer O-Rings ONLY			
(Contains Modutrol Motor Mounting Plate, Overrunning Linkage and Stop Arm)				26 6725-50 Spark Rod and Insulator Assembly			
N/S	2010200	1"		27 6747-00 Vent Tube (Used w/ Diaphragm Gas Valves)			
N/S	2010300	1-1/4"		28A 6725-90 Pilot with Flamerod and Spark Rod Assemblies mounted. All UL burners with Diaphragm Valve and all CUL burners with Motorized Valve.			
N/S	2010400	1-1/2"		28B 6725-91 Pilot with Flamerod and Spark Rod Assemblies mounted. All UL burners with Motorized Valve			
N/S	2010500	2"		28C 6725-92 Pilot with Flamerod and Spark Rod Assemblies mounted. All CUL burners with Diaphragm valve.			
BURNER CHASSIS				29 6720-90 Mounting Clamp for Flamerod Assembly			
15A	6712-05	Flame Retention Plate 5" w/ Mounting Screws—Models G56, G57 & G58		30 6717-00 Flamerod and Insulator Assembly			
15B	6712-12	Flame Retention Plate 4.9" w/ Mounting. Screws used on OEM models consult factory for applications		31 8483-33 1/4 MPT X 3/8 Tube Str. Connector			
15C	6713-05	Flame Retention Plate 6" w/ Mounting Screws -- Model G69					
BURNER CHASSIS - NOZZLES							
16A	6735-50	Manifold Weldment (5x1) Nozzle - G56 and G57 Nat & LP Gas and G58 LP Gas					
16B	6735-00	Manifold Weldment (5x2) Nozzle G58 Nat Gas					
16C	6740-00	Manifold Weldment (6x2) Nozzle G69 Nat Gas					
16D	6740-05	Manifold Weldment (6x1) Nozzle G69 LP Gas					
BURNER CHASSIS - SLEEVES & FLANGES							
17A	6736-00	Adj Alloy 5"x5" Sleeve- G56, G57 & G58					
17B	6741-00	Adj Alloy 6" Sleeve- G69					
18A	2020300	5" Mounting Flange Kit G56,G57 & G58					
18B	2020800	6" Mounting Flange Kit G69					

Item	Part #	Description	N/S = Not Shown	Item	Part #	Description	N/S = Not Shown
DRAWER ASSEMBLY COMPONENT				TERMINAL STRIPS			
32	8484-72	Strain Relief SR-4K-1 Straight		41	8408-42	10 Terminal Strip	
33	7122-90	Peep Sight Assembly w/ Gasket & Mounting Screws		42	8408-78	3 Terminal Strip	
34	8457-46	Strain Relief Bushing for Spark Cable		MISCELLANEOUS REPLACEMENT PARTS FOR FIRING RATE CONTROL			
N/S	6717-90	Flamerod Wire Replacement Kit		MBF VALVE (Motorized Butterfly Valve)			
N/S	8502-05	Spark Cable		SRBF VALVE (Spring Return Butterfly Valve-- Valve Actuator Operated)			
TEE KITS ** Straight Kits Not Available				N/S	2926-50	Overrunning Spring and Rod Assembly -- 3/4" to 3" MBF Valve	
35A	6766-00	Nat G56 gas #60 Dr. (.040), air #26 Dr. (.147)		N/S	2926-00	MBF Overrunning Spring	
35B	6766-01	Nat G57 gas #60 Dr. (.040), air #30 Dr. (.128)		N/S	2919-01	Stop Arm for MBF Valve	
35C	6766-02	Nat G58 gas #55 Dr. (.052), air #26 Dr. (.147)		N/S	8450-94	Crank Arm -- Air Shutter and MBF Valve Shafts	
35D	6766-05	Prop G56 gas #64 Dr. (.036), air #26 Dr. (.147)		N/S	7180-20	Connecting Rod -- Air Shutter to MBF Valve or Valve Actuator	
BLOWER HOUSING				N/S	8450-18	Connecting Rod Ball Joint	
36	6724-10	Blower Inlet Screen		N/S	8432-02	3/8" diameter O-Ring for BF Valves and MBF Valves	
37A	6755-50	Air Shutter—Models G56 & G57					
37B	3246-08	Air Shutter—Models G58 & G69					
38	6734-01	Air Shutter Shaft					
39	3152-01	Quadrant—for Air Shutter Adjustment					
N/S	8400-10	Pilot Pressure Regulator, 1/4" Natural and Propane (1/2 PSI maximum inlet pressure)					
FLAME SAFEGUARD and ACCESSORIES							
OTHER CONTROLS							
40A	8425-19	Blower Air Switch (Chicago Safety Prod. #SMP; Tri-delta #FP4039)					
40B	8425-22	Blower Air Switch Canadian Versions					
N/S	8406-68	DPST Relay (Aromat: JH2A-W-AC120V- Q, Potter Brumfield: T9S7A22-120)					
N/S	8425-73	High Gas Pressure Switch (note # 3)					
N/S	8425-62	Low Gas Pressure Switch (see note # 3)					
N/S	8423-03	On-Off Toggle Switch (CH7500K14)					
N/S	8406-38	R4222D DPDT Switching Relay					

Unipower G Series Parts Lists

NOTES

1. Starting in July 1980 (Date Code 3080), the one piece Spark Rod Assembly Retainer was superseded by a three piece Retainer Assembly which features an O-Ring seal to compensate for any irregularities in the Spark Rod size or shape. When replacing the Spark Rod, the O-Ring and the one piece Retainer (on burners where it is still in use) should also be replaced.
2. The Chicago Safety Products single body High-Low Gas Pressure Switch, Model HLGP, used through June 22, 1981 (Date Code 2681), has been superseded by an assembly of individual high and low pressure switches mounted on a junction box. For replacement of the single body High-Low Switch, order Kit Number 6765-95, which includes 8449-88 Installation Bulletin.
3. Replacement individual High or Low Gas Pressure Switches may be a different make and have a different physical configuration than that previously supplied, but the mounting and wiring will be the same. Request Bulletin 8449-88 for terminal identification.
4. 30-second minimum pre-ignition purge is used with On-Off burners having the blower air shutter locked in a "fixed" firing rate position. Where the air shutter position is automatically controlled, a 90-second minimum purge or a purge with the air shutter driven to the "high fire" position, is required. Failure to keep pre-purge at its intended timing will VOID the UL listing.
5. Replacement of the unavailable Push-Pull Input Adjusters can be accomplished by substituting a butterfly valve assembly. The BF assembly is a straight line design, whereas the Push-Pull is a right angle design. This will require further replacement adjustments, as valve train pipe fittings will have to be rearranged. Be sure to carry out the same general arrangement: BF assembly between Automatic Safety Valve and burner chassis.
6. Three Phase Arrow-Hart (A-H) Motor Starters and accessories no longer available from MIDCO. Obtain locally.
7. Honeywell R4795 discontinued (Nov. 93) construction features Honeywell RM7895 Flame Safeguards (Nov. 93)
8. Dual Main Valves as standard construction April 1, 1994 (UL 795 requirement)



Midco
INTERNATIONAL

Midco® International Inc. - 4140 West Victoria Street - Chicago, Illinois 60646 - toll free: 866 705 0514
tel: 773.604.8700 - fax: 773.604.4070 - web: www.midcointernational.com - e-mail: sales@midcointernational.com



525
8472 00
Printed in USA